



**Cable ID: WONDERFUL-CAT6-SFTP-PR-90**

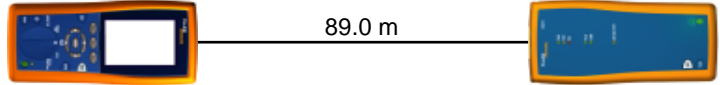
Date / Time: 27-05-2018 04:00:40 PM  
**Headroom 4.8 dB (NEXT 12-36)**  
**Test Limit: TIA Cat 6 Perm. Link**  
 Cable Type: Cat 6 F/UTP  
 NVP: 70.0%

Operator: WWW.IRANFLUKE.IR  
 Software Version: 2.7800  
 Limits Version: 1.9500

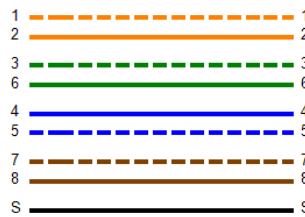
**Test Summary: PASS**

Model: DTX-1800  
 Main S/N: 1567547  
 Remote S/N: 9003016  
 Main Adapter: DTX-PLA002  
 Remote Adapter: DTX-PLA002

Length (m), Limit 90.0	[Pair 78]	89.0
Prop. Delay (ns), Limit 498	[Pair 45]	454
Delay Skew (ns), Limit 44	[Pair 45]	30
Resistance (ohms)	[Pair 45]	14.1
Insertion Loss Margin (dB)	[Pair 45]	4.2
Frequency (MHz)	[Pair 45]	250.0
Limit (dB)	[Pair 45]	31.1

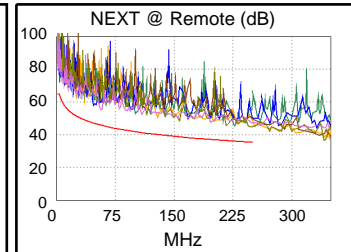
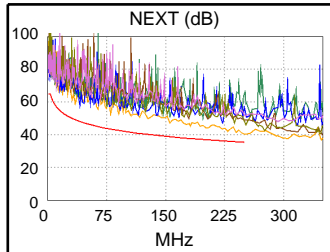


Wire Map (T568B)  
**PASS**

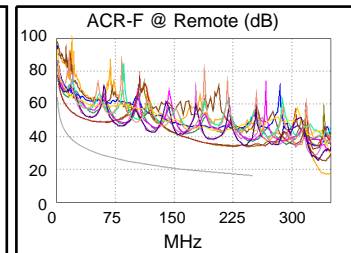
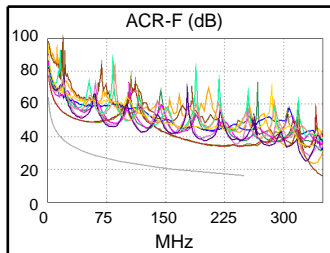


Worst Case Margin Worst Case Value

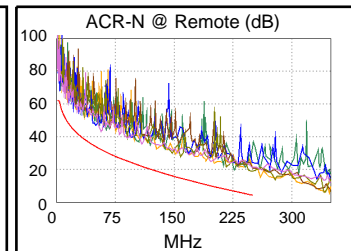
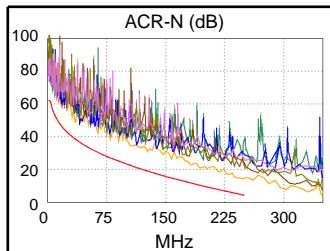
PASS	MAIN	SR	MAIN	SR
Worst Pair	12-36	45-78	12-36	36-78
<b>NEXT (dB)</b>	4.8	8.5	4.8	9.2
Freq. (MHz)	249.5	57.3	249.5	248.5
Limit (dB)	35.4	45.8	35.4	35.4
Worst Pair	36	36	36	36
<b>PS NEXT (dB)</b>	6.8	9.0	6.8	9.0
Freq. (MHz)	249.5	230.5	249.5	232.0
Limit (dB)	32.7	33.3	32.7	33.2



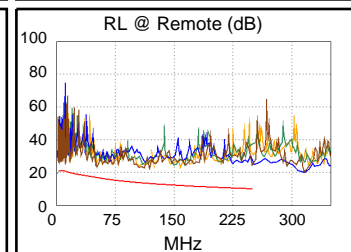
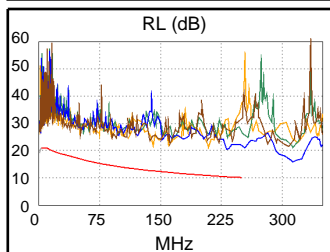
PASS	MAIN	SR	MAIN	SR
Worst Pair	45-36	36-45	36-45	36-45
<b>ACR-F (dB)</b>	16.4	16.3	16.8	17.3
Freq. (MHz)	8.4	9.6	227.0	243.0
Limit (dB)	45.7	44.5	17.1	16.5
Worst Pair	45	45	36	36
<b>PS ACR-F (dB)</b>	14.6	14.7	18.5	18.2
Freq. (MHz)	1.0	1.0	244.0	240.0
Limit (dB)	61.2	61.2	13.4	13.6



N/A	MAIN	SR	MAIN	SR
Worst Pair	12-36	12-78	12-36	36-78
<b>ACR-N (dB)</b>	9.0	9.5	9.1	14.3
Freq. (MHz)	35.5	3.9	249.5	248.5
Limit (dB)	38.4	60.8	4.3	4.4
Worst Pair	12	12	36	36
<b>PS ACR-N (dB)</b>	10.7	10.3	11.0	13.8
Freq. (MHz)	35.5	4.0	249.5	249.0
Limit (dB)	36.0	58.3	1.7	1.7



PASS	MAIN	SR	MAIN	SR
Worst Pair	78	78	45	78
<b>RL (dB)</b>	8.2	6.4	9.8	8.0
Freq. (MHz)	3.8	51.5	232.0	106.0
Limit (dB)	21.0	16.9	10.3	13.7



Compliant Network Standards:

10BASE-T	100BASE-TX	100BASE-T4
1000BASE-T	ATM-25	ATM-51
ATM-155	100VG-AnyLan	TR-4
TR-16 Active	TR-16 Passive	